

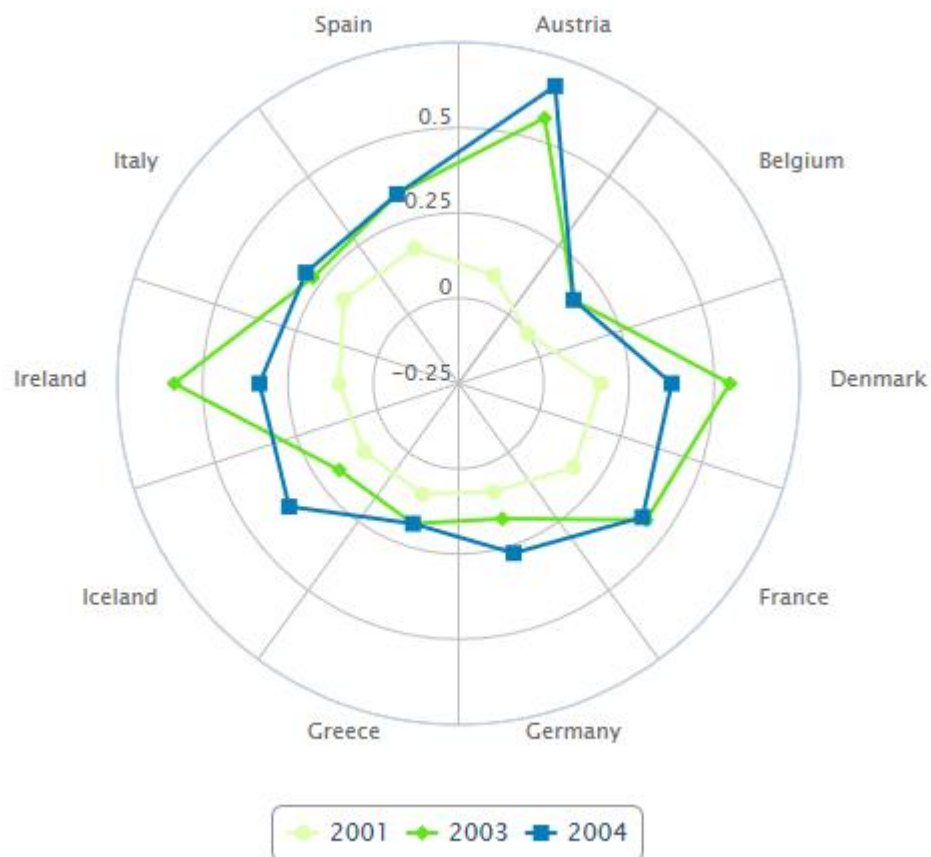
COMP9322 Week 9 Tutorial

Using CubViz to explore RDF Cube datasets

These exercises use the CubViz tool, available from EU Open Data Portal:

<https://data.europa.eu/euodp/cubeviz/>

1. Read the lecture slides and use CubViz to create a visualization of the test dataset
2. Modify the visualization in the following way:



3. Download the RDF data in Turtle format. Draw the RDF graph showing the different nodes and links (you can omit the `rdfs:label` and `rdfs:comment` links).
4. What is the `rdfs:label` of this dataset ?
5. Try download the dataset with the `rdfs:label` "% of basic public services for enterprises, which are fully available online" ;